

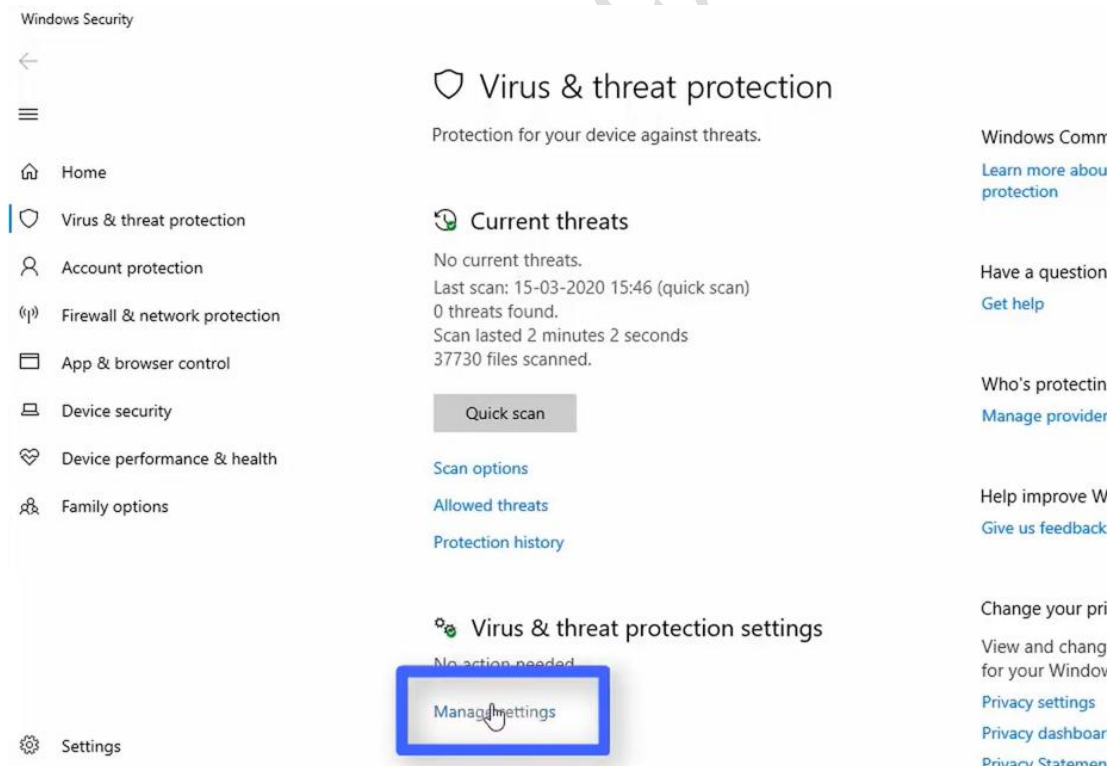
Neware BTS8.0 Software & Hardware Connection Manual

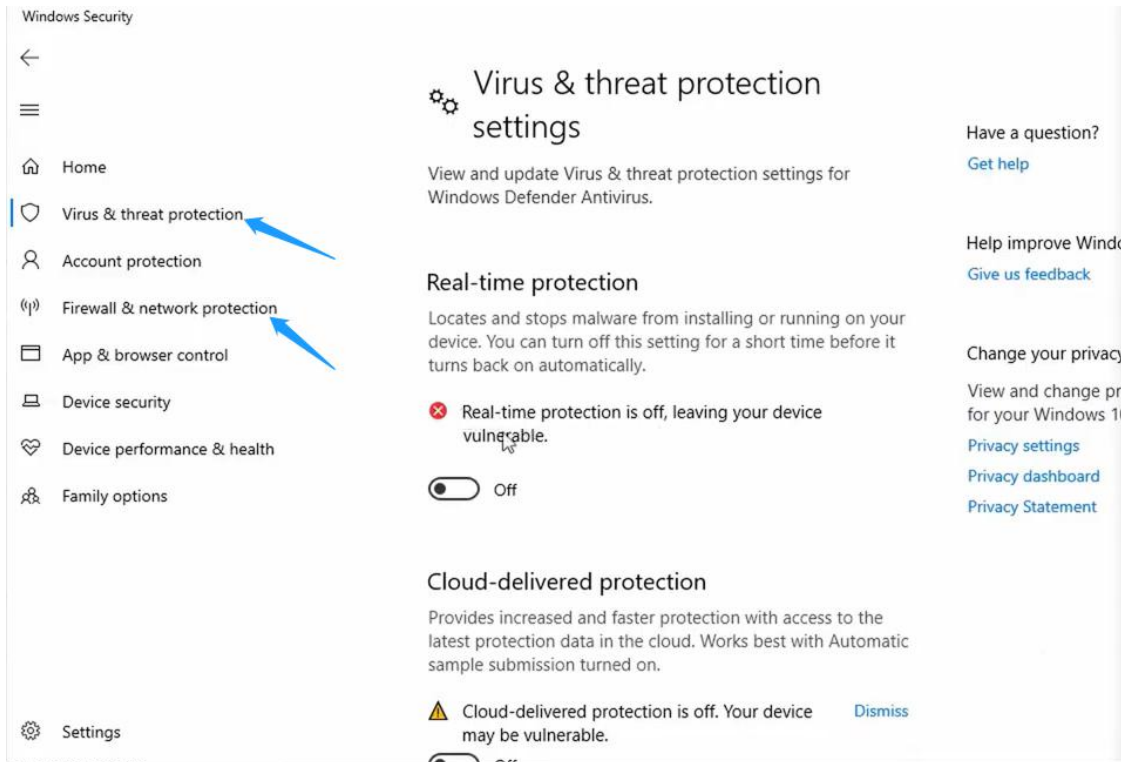
1. Host computer Requirement:

Item	Configuration
CPU	Intel i3 or better
Memory	4GB minimum, 8GB+ better
Hard drive	500GB+
File system	NTFS
OS	Windows 7/10, 64bit
Interfaces	USB, Ethernet

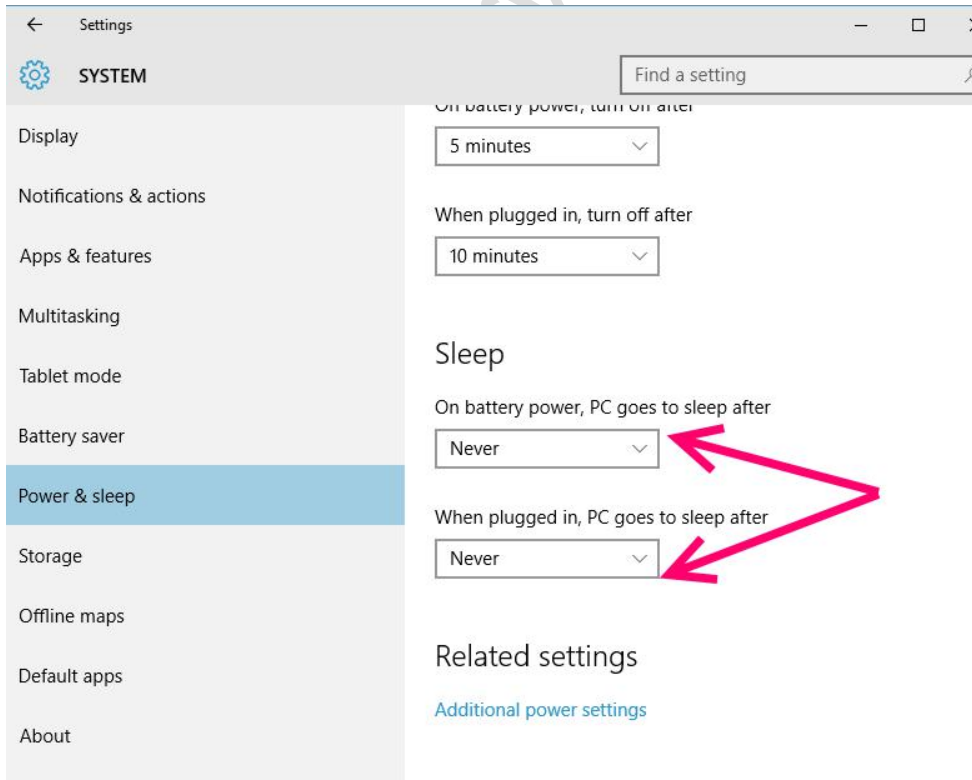
2. Host computer Setup

2.1 Shut down Windows Defender (Anti-Virus and Firewall)





2.2 Turning Off Sleep Settings



2.3 Uninstall McAfee or any other Anti-Virus and Firewall in this computer

Apps & features

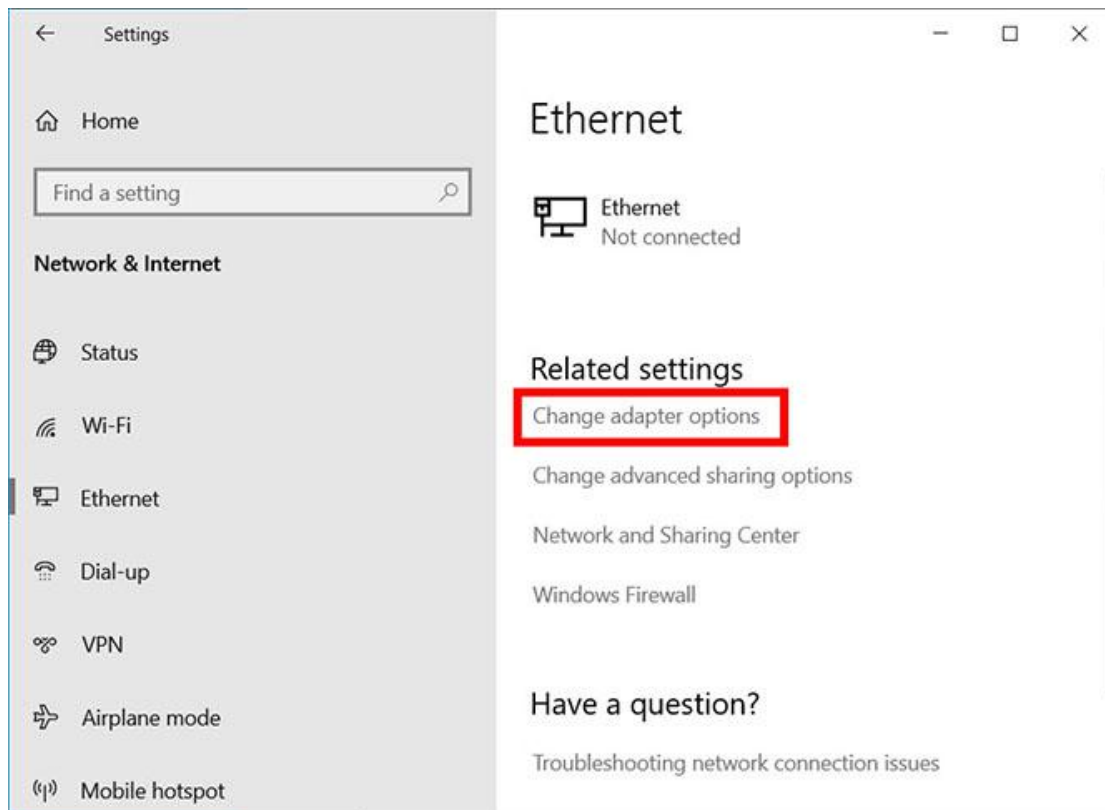
The screenshot shows the Windows 'Apps & features' interface. The McAfee Personal Security application is selected. A context menu is open over the application, showing 'Move' and 'Uninstall' buttons. A red arrow points to the 'Uninstall' button. A dialog box is displayed over the 'Uninstall' button, stating: 'This app and its related info will be uninstalled.' Below the dialog box, the 'Uninstall' button is visible again.

App Name	Developer	Size	Installation Date
Maps	Microsoft Corporation	16.0 KB	25-11-2019
McAfee® Personal Security	McAfee Inc.		
Messaging	Microsoft Corporation	52.0 KB	25-11-2019
Microsoft Edge	Microsoft Corporation	15.6 MB	19-11-2019

Tips: if you can't uninstall the Anti-Virus and Firewall, please add Newware folder/file to the Trusted Items list

The screenshot shows the McAfee LiveSafe interface. The 'Quarantined And Trusted Items' window is open, displaying the 'Trusted Items' section. The text reads: 'McAfee will no longer detect these threats in your next scan because you chose to trust them during a scan. You can remove them from the list so McAfee can detect them again.' Below this text is a table with columns 'Threats Detected' and 'Type'. A 'Remove From Trusted List' button is visible at the bottom of the table. On the right side of the interface, there is a sidebar with navigation options: Home, Navigation, and Help. At the bottom right, there is a notification: 'Viruses removed or quarantined since 9/15/2016' with a large number '8' and a 'Security Report' link. The footer contains 'Copyright © 2016 McAfee, Inc.', 'Threat Map | About', and the McAfee logo.

2.4 Change your computer's Ethernet Internet TCP/IP4 address into 192.168.1.250



3. Hardware Connection

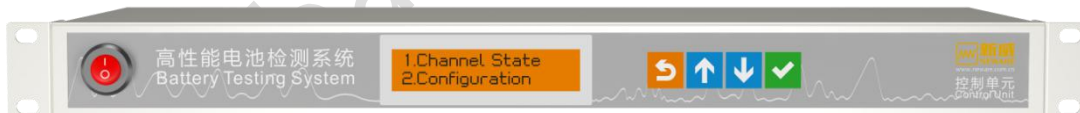


3.1 Blue color RS485--connected with--RS485, left back side of the device;

3.2 Control Unit's black color ethernet--connected with--computer(or to adaptor), middle of the control unit.

4. Check the Control Units parameter(Factory default settings)

4.1 Power on, click \uparrow or \downarrow on the right side the LCD , choose **2.Configuration**, click \downarrow



4.2 Check No.2, **Get IP Addr: MANUAL**



4.3 Check No.4, Local-IP **LP:192.168.1.X** ($0 < X < 255$, and $X \neq 250$)



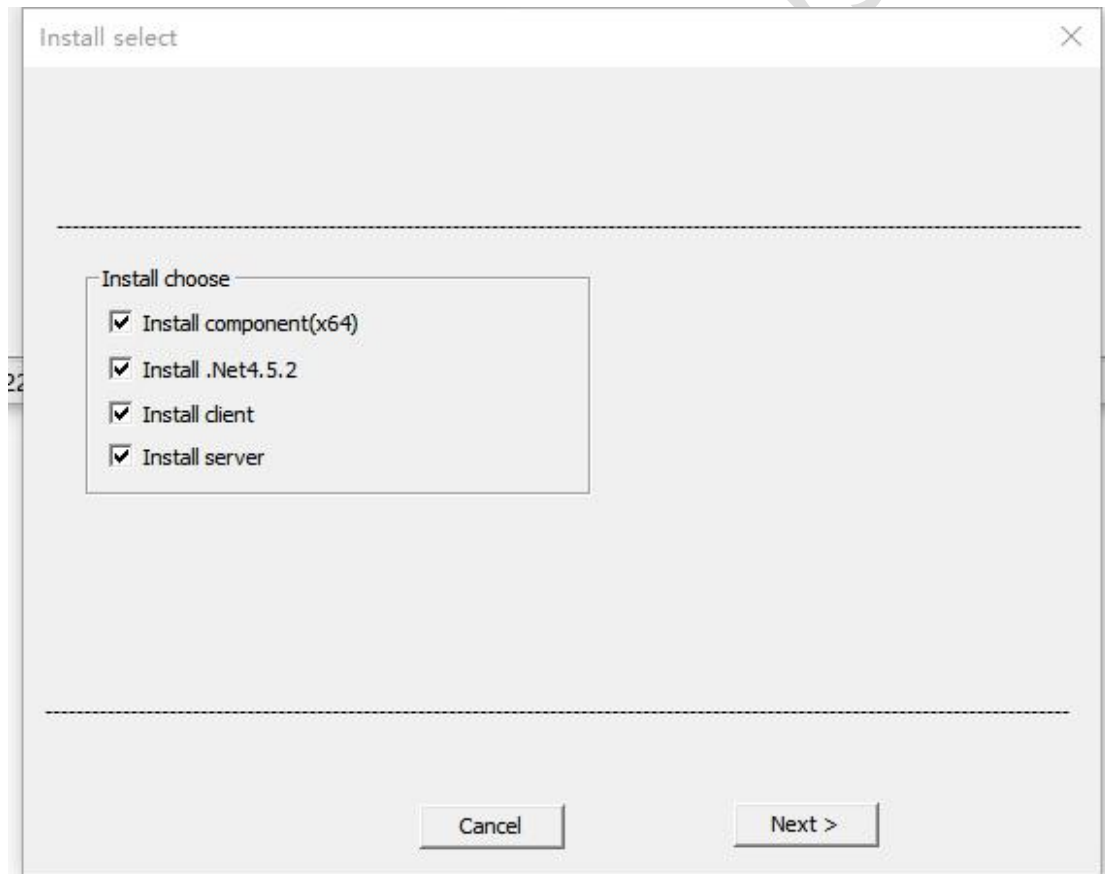
4.4 Check No.6, GW: 192.168.1.1



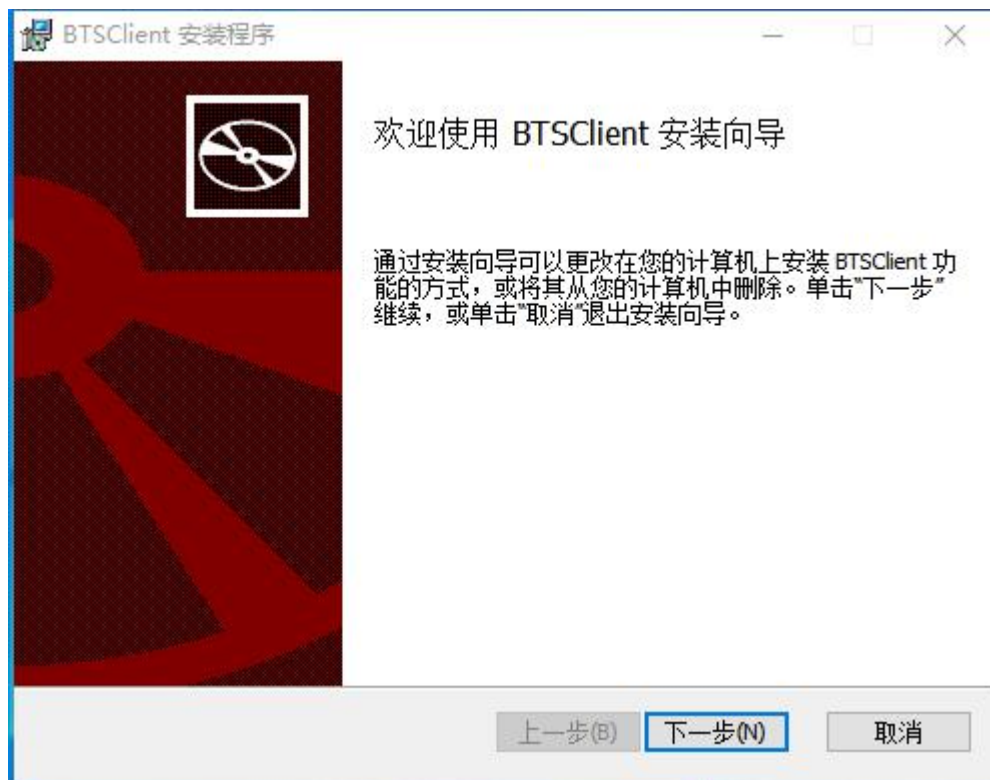
4.5 Check No.7, Server-IP SP:192.168.1.250(The same as computer's Ethernet Internet TCP/IP4 address)



5. BTS8.0 Software install



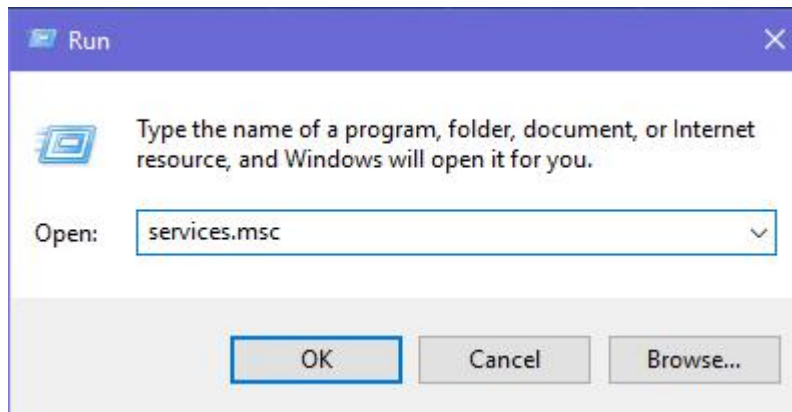
5.1 BTSCient install



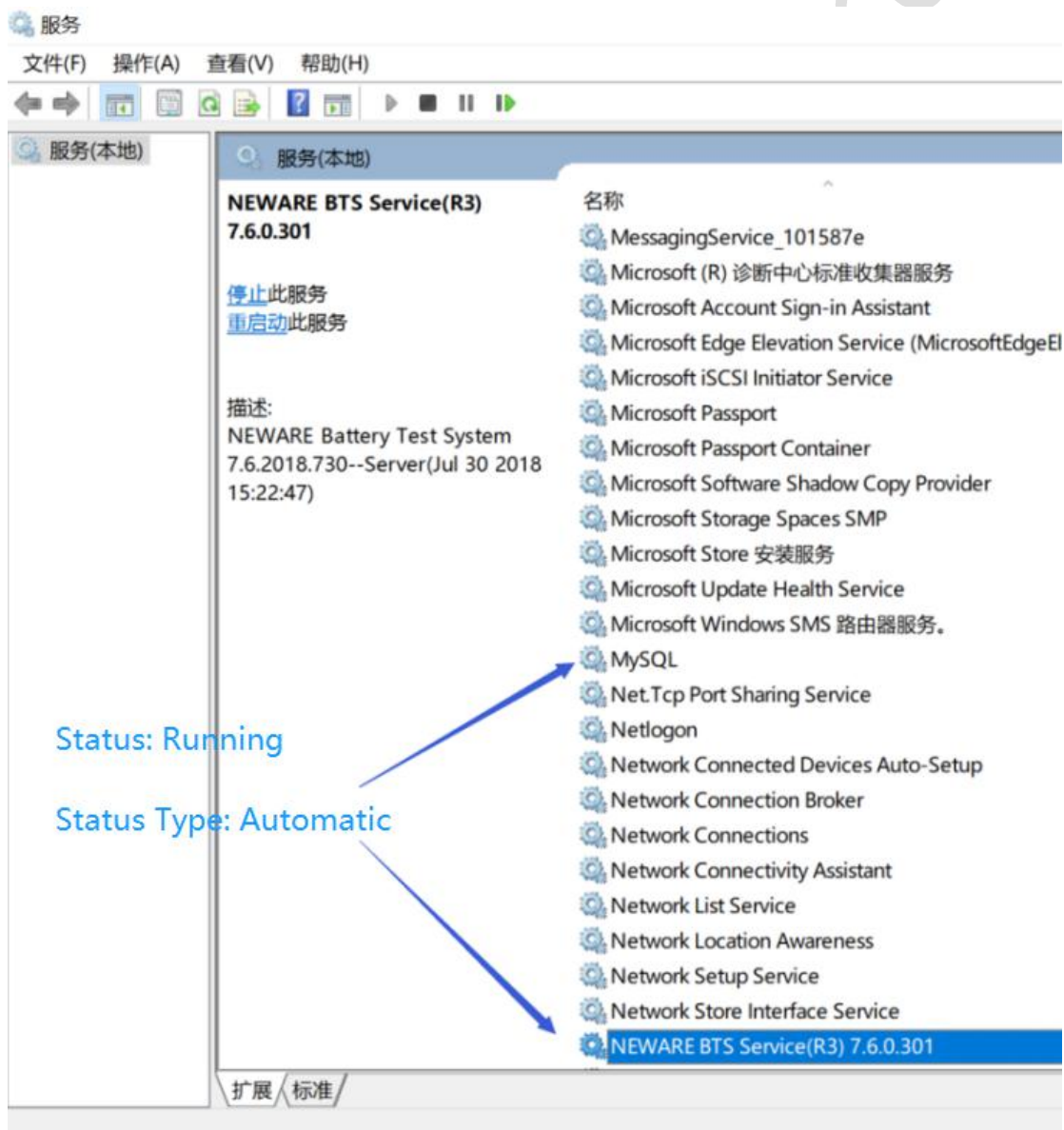
5.2 BTSServer install



5.3 Check the Services of NEWARE



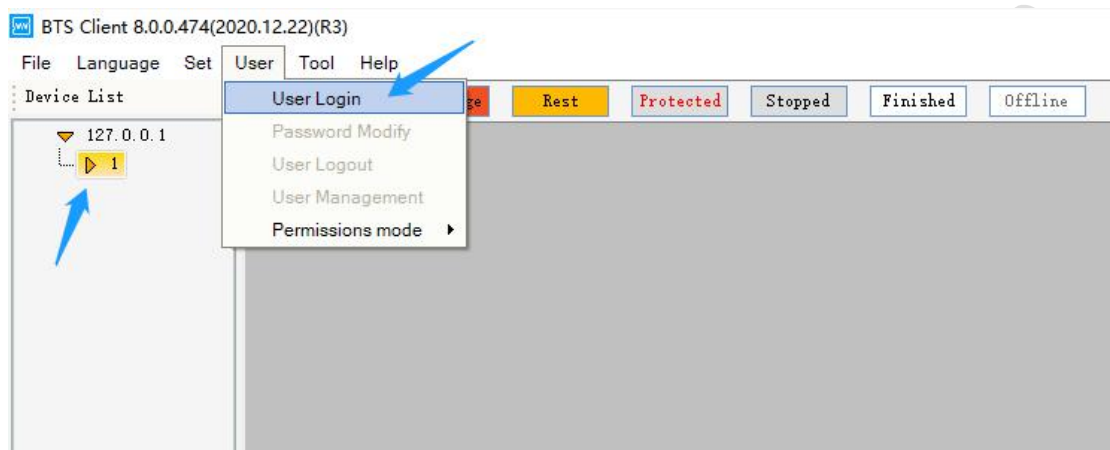
5.4 Check the status of “MySQL” and “NEWARE BTS Service”



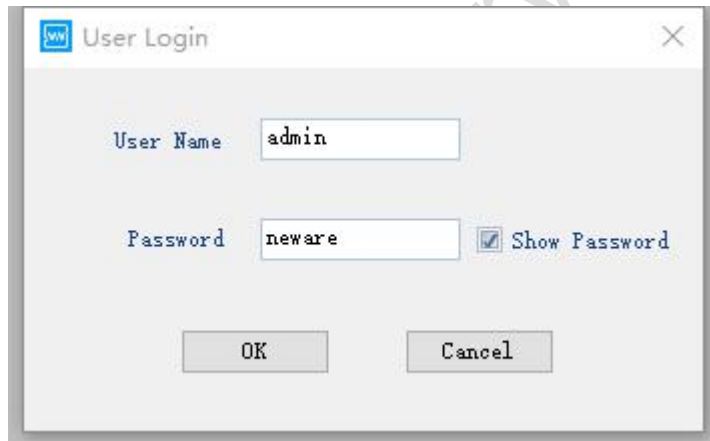


6. Start the BTS8.0.0 on the desktop

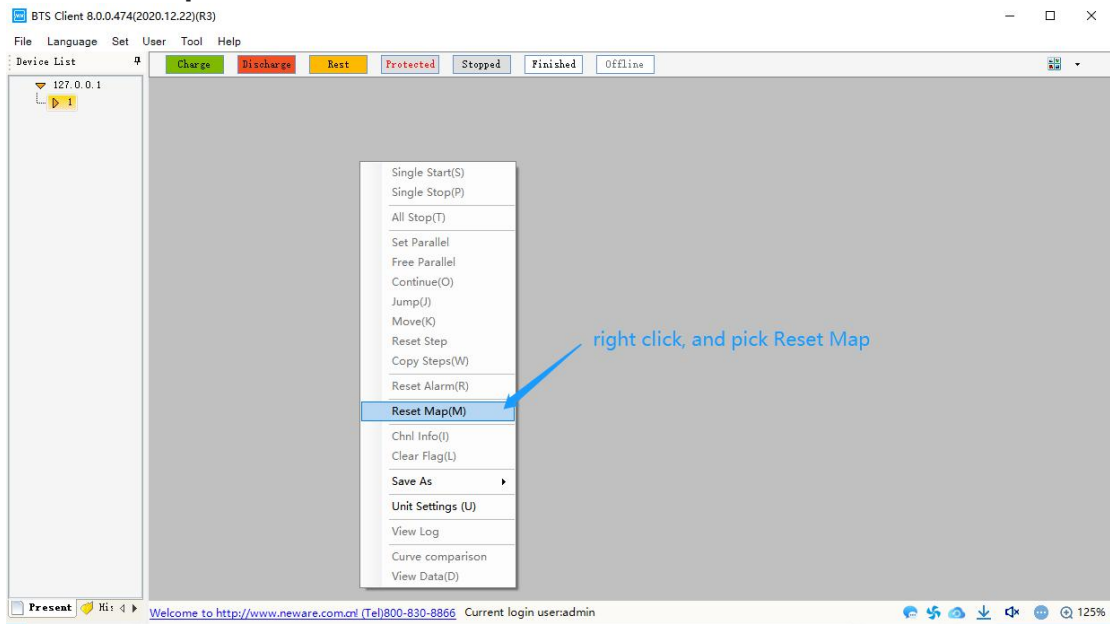
7. Choose the number under 127.0.0.1, then User Login



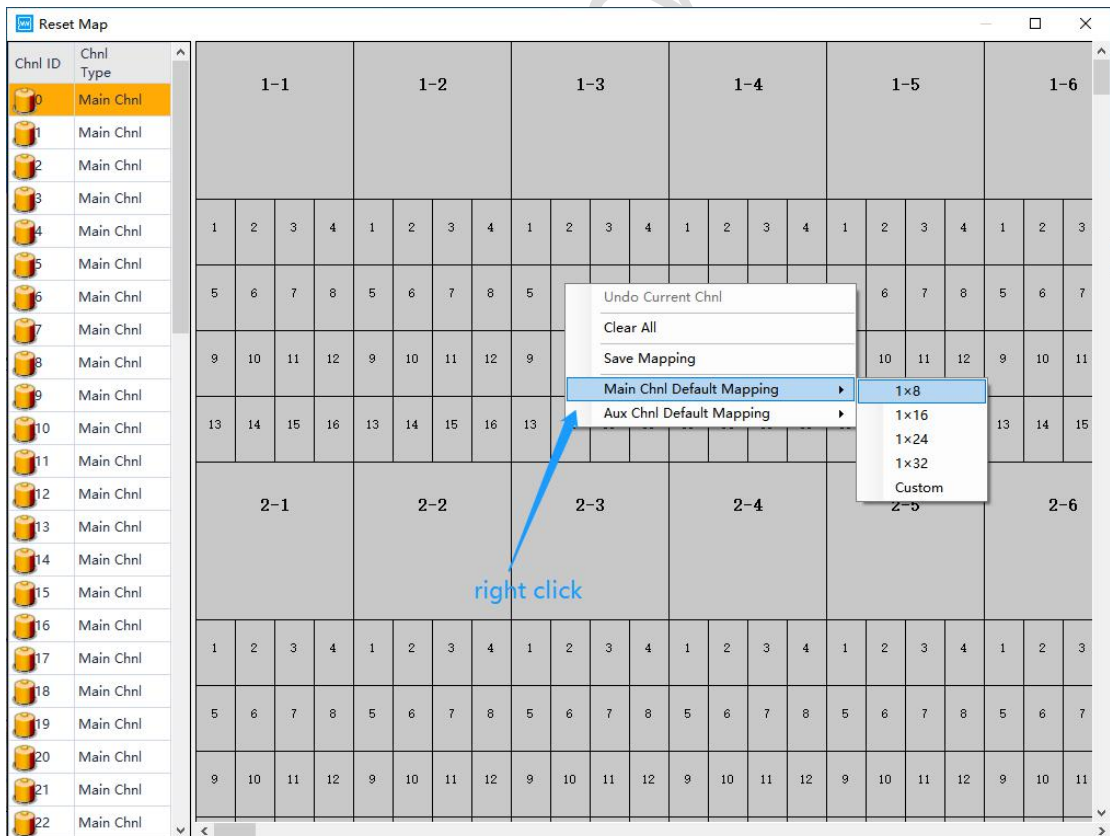
7.1 User Name: admin, Password: neware



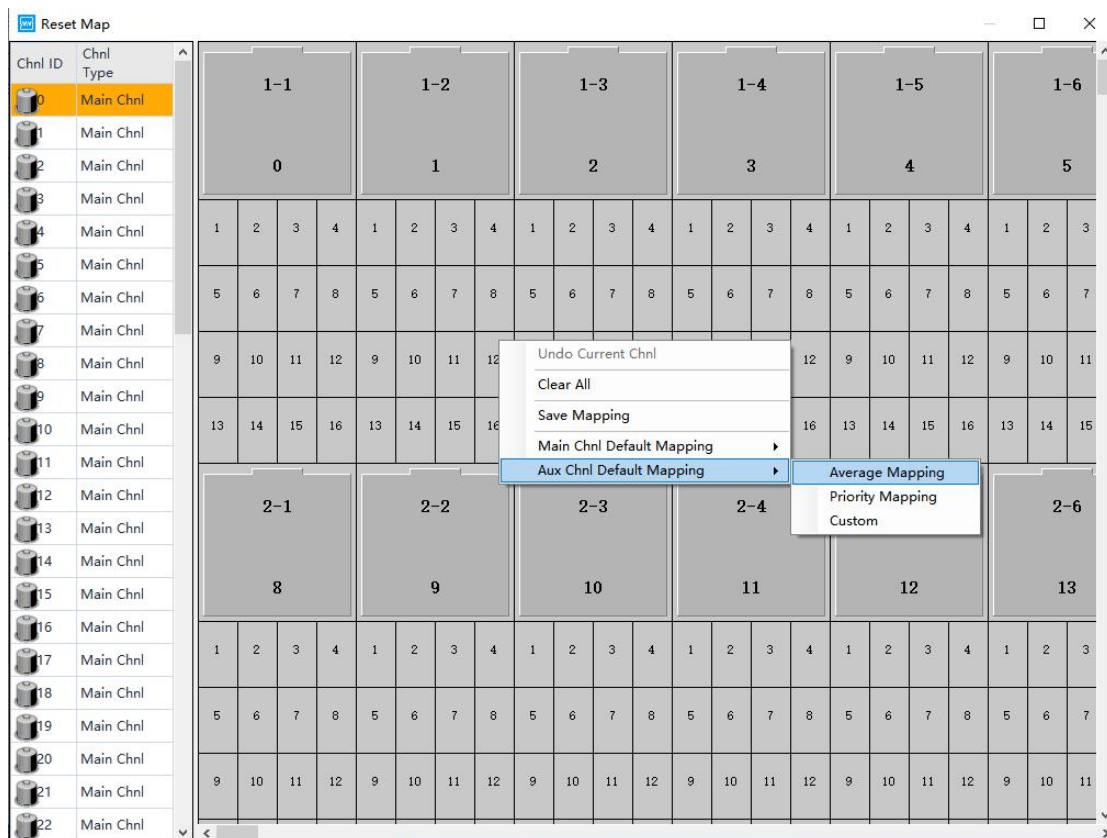
8. Reset map



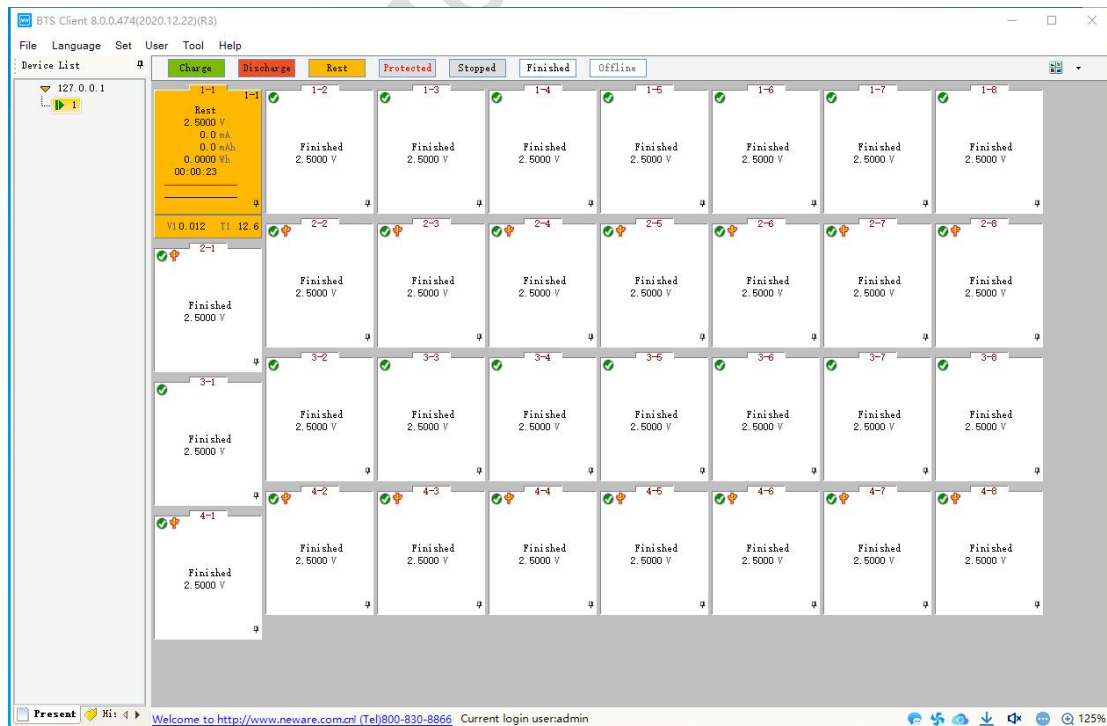
8.1 Main Channel Default Mapping: 1x8



8.2 Aux Channel Default Mapping(if have): Average Mapping



8.2 Software and hardware connection complete.



Want to know more please visit: <http://www.battery-cyclers.com/>